

2024
OFFICIAL
PROGRAM

It's Show Time

GAWLER SHOW

AUGUST 24 ★ AUGUST 25



Trinity College
**Roseworthy
Now Open**

2025 Scholarships Now Available



Visit our website for details... www.trinity.sa.edu.au

8693G35

Don't forget to visit the Town of Gawler stand in the foyer area of the main building and enter the **FREE** competition to win some fabulous prizes.

You can also get your Treasure Trail map stamped and collect a free gift?



On behalf of the Town of Gawler, I am delighted to welcome you to this 170th year of the Gawler Show. This wonderful event, which has been running since 1854, is South Australia's largest regional show and a much-loved tradition in the Gawler community.

The Gawler Show showcases the best of our community and the region from the impressive displays of local farmers, horticulturists, and floriculturists to the vibrant food stalls, entertainment, and traditional sideshow alley. The popular Treasure Trail and show bags for both kids and adults add to the excitement and offer fun for all of the family to enjoy.

This is all made possible by the hard work and dedication of the Gawler Show Society committee members, along with many volunteers and Society members who work all year round to plan a wide range of activities and attractions. Their efforts ensure that there is something for everyone to enjoy, and we thank them for their hard work and dedication in bringing this event to the community each year.

The Town of Gawler, its Elected Members and the Community take great pride in being long-term supporters and sponsors of this outstanding event and we encourage you to explore everything the show has to offer. This is the biggest and most successful event in Gawler each year and a highlight of our community calendar.

Thank you for your continued support and participation.

Mayor Karen Redman

Gawler



PRESIDENT'S MESSAGE

WELCOME to our official Show program, where we reflect on the successes of 2023 and look forward to an exciting future.

This year, the society proudly celebrates 170 years since its establishment on October 2, 1854.

It all began after a special public meeting convened at the Globe Inn (now the Kingsford Hotel).

The society was established as the central point of a large agricultural district, where townspeople gathered to meet, celebrate and trade.

The inaugural Show highlighted the region's strengths in crops, machinery and pastoral activities.

The founding committee members were highly regarded individuals in Gawler, including several local councillors who recognised the value of bringing a large festival to the region.

Last year was truly exceptional for us, marked by the introduction of new attractions that captivated our audience.

The inaugural Farm Fresh area celebrated South Australian made products, while the Newkree Educational Farm delighted visitors of all ages,

educating them on the origins of their food.

With around 30,000 enthusiastic visitors, our event continues to grow in popularity and impact.

The launch of our online competitions platform, Showday, streamlined our operations, allowing us to focus more on enhancing our competitions and sourcing prizes.

This resulted in over 3000 entries across our indoor and livestock sections, showcasing the talent and passion of our participants.

This year, the Grand Lottery continues to support our efforts, contributing significantly to our success.

Last year, the Grand Lottery generated a profit of \$30,000, which has been reinvested into essential improvements thanks to the generous support of our sponsors.

These funds have enabled us to make improvements to our office and sheds, procure new cattle and sheep panels and upgrade our storage equipment for improved safety and efficiency.

In addition, this year sees the return of the community stage, bringing even more entertainment options to families.

Local bands, and school

groups will lead the way on the community stage, while our main stage will see many favourites return like The Funny Farmers and Kozmik's Space Show, and plenty of new and exciting acts like The Sun of Africa.

As we move forward, we remain committed to building on this rich heritage, fostering innovation and expanding our offerings.

Together, we are shaping a bright future for our show, reinforcing its financial stability and ensuring its continued growth.

Thank you for being a part of our journey. I would like to express my sincere gratitude to all our wonderful sponsors, patrons, volunteers, community groups, committee members and incredible staff who make this event possible.

Your support and dedication is truly appreciated.

We can't wait to see you on August 24 and 25 for an incredible weekend at South Australia's largest regional Show.

*Isaiah Tesselaar,
President, Gawler
Agricultural, Horticultural
and Floricultural Society Inc.*



TICKETING INFO

Saturday, August 24 9am to 9pm
Sunday, August 25 9am to 5pm

Purchase tickets at the gate (EFTPOS available) or order online to skip the queue.

Adult \$20.00

Concession \$15.00

Child \$10.00

Family \$60.00

2 Adults and 3 Children aged 0-15 years

Child under 5 FREE

Become a member

Membership tickets can be purchased at gawlershow.org.au and offer the opportunity to become a part of the Gawler Show community.

Benefits include a reduced price on entry to the Show and voting rights at Gawler Show Special General Meetings and at the Annual General Meeting, to be held in March, 2025.

Getting to the Show

The Gawler Showground is located at Princes Park, off Nixon Terrace. Gates are only a short 300 metre walk from the closest train station, 'Gawler Oval'.

If you're driving, keep an eye out for off-street parking areas that directly benefit the local community. Community groups will operate three carparks across Lawrence Ave (\$10), Henry Chenoweth Park (\$10) and Goose Island (\$5).

GAWLER SHOW



www.gawlershow.org.au

The Bunyip



EXCLUSIVE PUBLICATION PROUDLY CREATED BY THE BUNYIP NEWSPAPER IN PARTNERSHIP WITH GAWLER AH&F SOCIETY
120 Murray Street, Gawler SA 5118 | Phone (08) 8522 1233 | office@bunyippress.com.au | www.bunyippress.com.au
Editorial: Ben Lennon, Aidan Curtis, Jem Nash, Imogen Evans and Liam Phillips.
Graphic Design: Cassie Mower. **Advertising:** Tony Swan, Paul Miles, Claire Abbott.



We don't sell houses. We sell homes

List and sell with Ray White Gawler East and we'll refer \$500 back to your chosen sporting or community club.

RayWhite
GAWLER EAST

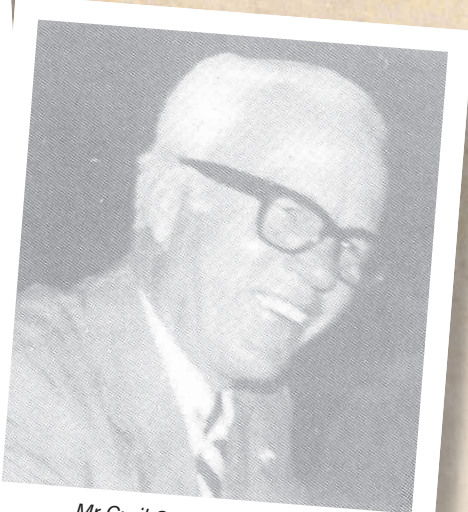
Shop B03, 4 Mullamar Way, Gawler East, SA 5118
(08) 7806 8227

RLA 327615

More than a century of work builds Gawler Show



Federal Minister of Agriculture, Mr Ian Sinclair, opening the 1978 Show. Behind him is the then Society president, Mr Colin Lienert.



Mr Cyril Cockshell... a tireless worker for the Society who is one of five men made life members in 1981.



Former leading pigeon fancier Mr Bruce Burt proudly shows off his Jacobin pigeon which won a blue ribbon in 1965.



Four life members of the Gawler Show Society pictured in 1980: Mr W.H. Congdon (left), Mr M.C. Hillier, Mr G.C. Tozer and Mr H.A. Dahlitz.

AIDAN CURTIS

CLOSE to two centuries of history have gone into building the Gawler Show into one of the biggest regional showcases in South Australia.

With the Show set to celebrate its 170th edition in 2024, the many stories that went into making the Show such a success have come to the fore. Gawler historian Helen Hennessy has researched the Show extensively and said there are interesting tales anywhere one looks.

Ms Hennessy said the Show traced the story of Gawler throughout the years, with community contributions highlighting what has influenced the town since it was first settled.

"From my point of view, from the things I have read about it... it's had a particularly strong influence on the town, initially focussing on the agricultural, horticultural and floricultural," she said.

"I think that reflects the type of industry we had in Gawler through that period.

"We started off broadacre, agriculture growing wheat and grain, but then we moved into the horticulture, which is more orchard based and we were growing things like oranges here.

"Then we get the floriculture, which I haven't dug down, but that was very strong here as well - particularly more in the 20th century."

Ms Hennessy said one of the most impressive things was the sheer number of contributors to the Show.

"If you think of the number of people that volunteered all those years to make sure this community-based organisation continues, that would be pretty impressive," she said.

With annual Show booklets, plus articles in Gawler's newspaper, *The Bunyip*, tracking each year of contributors, Ms Hennessy said it was one of the better-resourced events for historians.

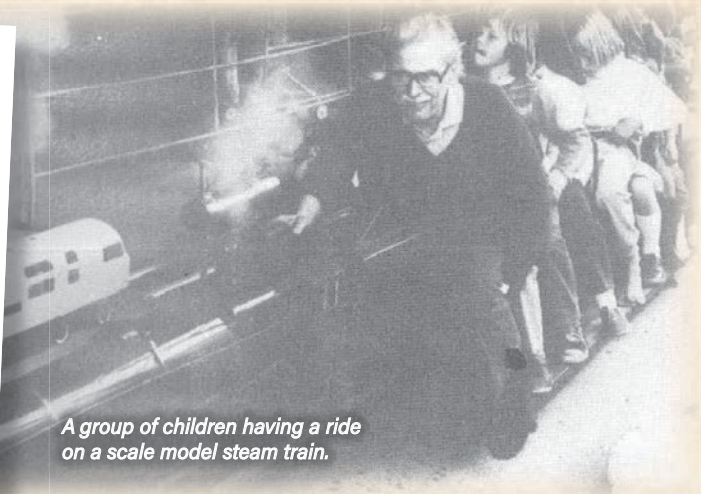
"[The booklets are] really valuable because you can see not just necessarily the



The then Leader of the Opposition, Mr Steele Hall, who officially opened the 1967 Show, with the Mayor of Gawler, Mr E.C. Goodger (centre) and Society president, Mr Murray Hillier.



Show time means toffee apple time.



A group of children having a ride on a scale model steam train.

NICK CHAMPION MP

State Member for Taylor

Standing up for the North

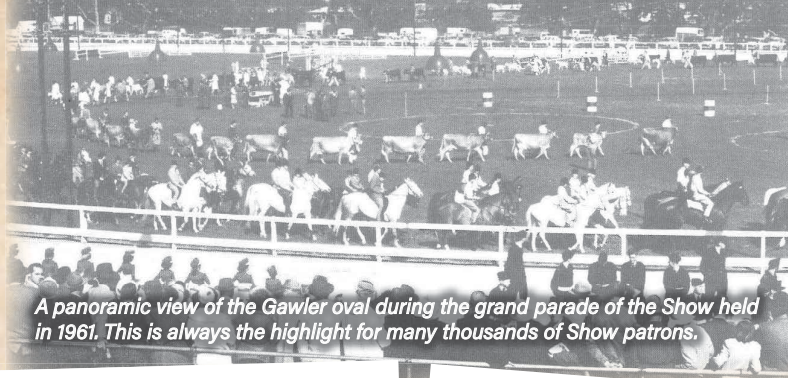
Contact me at
 (08) 8254 1023 | Taylor@parliament.sa.gov.au
 90/600 Main North Road, Smithfield | PO Box 144, Smithfield 5114

Authorised by Nick Champion MP, Smithfield SA 5114





A crowd scene at the 1903 Gawler Show.



A panoramic view of the Gawler oval during the grand parade of the Show held in 1961. This is always the highlight for many thousands of Show patrons.

best-known people in town, but the average person – farmers, shopkeepers, breeders, they're all in there," she said.

"I think it's a recognition of that continuous influence of the people that have lived here in those 170 years."

Ms Hennessy also said there were distinct periods to the Show's history, starting from the educational phase and developing into innovation, entertainment and community cohesion.

The Show has had a very strong educational role from the very beginning.

"Originally there wasn't a Show weekend as we know it, it was more of a gathering to show people and educate, an exchange of ideas, with people who had emigrated from the northern hemisphere who had no idea how to farm here," she said.

"As time went along, it started to pick up things about improvements and inventions local people were adapting – a lot of the ploughs were changed, the reaping machines, and part of the competition was to show off.

"Some of the foundries would put in examples of machinery they had developed and local people who had developed things and taken out patents."

With entertainment a big focus of the modern Show, Ms Hennessy said community cohesion was the underlying theme that brought it all together.

"It has always been a meeting place and a place where people renew friendships – even if they don't live here, people come to Gawler for the Show," she said.

"Volunteers recognise the Show is part of how they can support and strengthen the community."



James Martin who played a major role in establishing the society.

PHOTOS: Supplied



Showjumping was as popular then as it is now. T. F. Williams riding on Dandy who took out second prize in 1904.



Members of the 1981 Gawler A.H. & F. Society committee.

BUY 3 GET 1

FREE



BEST TYRE PRICE GUARANTEE

* Terms and conditions apply. See website for details

AUSTRALIA'S LARGEST INDEPENDENT TYRE RETAILER



8522 1538
bobjane.com.au

24 Murray St, Gawler

WE'LL LOOK AFTER YOU



TS6406


With special thanks and appreciation from the Gawler Show Society to all our partners and prize sponsors.


MAJOR PARTNERS












MEDIA PARTNER





PARTNERS





























SUPPORTING PARTNERS

- Affordable Marquees • Cross Com • David Hill Cleaning • Fire System Services • Gawler & Barossa Electrical
- Harlese (Bensons Showbags) • Howard & Sons Pyrotechnics • if ATM • Great Southern Security
- Remondis • St Johns • Showmen's Guild of SA

PRIZE SPONSORS

The Gawler A H & F Society Inc would like to thank all our very generous donors, who without their support the Gawler Show would not be possible. To view a full list of prize sponsors please visit www.gawlershow.org.au

5

FREE fun for everyone

THERE is no escaping the fact that Australia is in the throes of a cost-of-living crisis.

Getting into the housing market is becoming harder and harder, prices for almost everything are skyrocketing across the board and people are finding it harder to make ends meet.

This reality remained front of mind for the Show society when planning this year's event.

Something as large as the Gawler Show needs to be able to cater to everyone in society, particularly with the theme of community underpinning the whole operation.

Volunteers remain at the heart of the Show's functionality, further highlighting the strain the cost-of-living crisis has put on everyone.

To combat that, the committee banded together and decided that above all else, this year's Show would provide as much free entertainment as possible for showgoers looking for a nice day out.

"Life at the moment is getting more and more expensive, so we want to make sure we're giving back to the community through things that they can do for free," Gawler Show president Isaiah Tesselaar said.

"They're already paying to get into the Show, and it is expensive to have a day out, so we want to show off as many opportunities for people to enjoy the Show in different ways.

"Giving these free events, it gives people a bit more bang for their buck when they're heading out to the Show."

There will be plenty to see and do this year, with the community stage sure to be a hit with locals, while the grand parade remains on Sunday afternoon as a fun closer to an action-packed two days.

While fun will no doubt be on the agenda for the younger showgoers, parents can rest easy knowing they'll be getting an educational

experience in the Touch-A-Truck and Ag Learning areas as well as at all the stalls and shows across the weekend.

"The Young Farmers Challenge is definitely a major one," Mr Tesselaar said.

"We're hoping to run some heats for that over the weekend with the main event to come on Sunday.

"That's just getting kids involved in some farm activities and we displayed that at our Family Fun Day a couple of months ago.

"Otherwise everyone always enjoys being able to handle ducks, rabbits, chickens and things like that in the Ag Learning areas.

"We've also got a lot of entertainment options for people to have a look at for free."

Available across both days will be Nixon's Animal Adventures available from the Information Booth, which encourages showgoers to visit all the animals while unscrambling a word to go in the draw to win a Family Pass to next year's show.

The Rural Agriculture Zone is also open both days, and offers a fun line-up of free activities like the Rev-It-Up Racing simulator, Touch-A-Truck experience and blacksmith demonstrations.

The Agricultural Learning Centre will be open both Saturday and Sunday from 9am until 5pm, with a range of fun and exciting things to explore such as Bugs 'N Slugs, baby animals, goat milking demonstrations and wool displays.

In terms of entertainment, this year's Show is set to bring the action with two full days packed with free fun.

Gawler Broadcast Association is bringing a fun interactive wireless headphone party with their Silent Disco on the @ttn Village Green.

The Young Farmers Challenge and a number of competitions will also join woodchopping and shearing demonstrations over the weekend.

The Corralite Main Stage and Kennard Community Stage will be home to a massive line-up of local performers, dancers, singers and community groups who will entertain visitors all weekend.

There when you need them.

Beyond Bank is one of Australia's largest customer-owned banks. We've been working for and with our customers for over 60 years.

Our local team at Gawler branch are for and with you.

Gawler Branch

08 8526 4600
Gawler Central
Shopping Centre



Scan the code to book an appointment now.



FREE ACTIVITIES

FIREWORKS

Saturday at 8pm

GRAND PARADE

Sunday at 3pm

NIXON'S ANIMAL ADVENTURES

Encourages showgoers to visit all the animals while unscrambling a word to go in the draw to win a Family Pass to next year's Show. Available from the Information Booth (near to the Main Gate)

TOUCH-A-TRUCK

Get an up close experience:

- Australian Defence Force
- CFS Roseworthy
- CFS - Region 2 Air Ops
- SAPOL
- SES
- Drag Cars
- Trucks and a Crane

BLACKSMITH DEMONSTRATIONS

Throughout Saturday and Sunday

Located in the Rural Ag Zone (near the ALC)

CAR DISPLAY

Saturday

AGRICULTURAL LEARNING CENTRE (ALC)

Saturday and Sunday 9am to 5pm

Come and visit and explore all there is to do at the ALC:

- Valais Blacknose Sheep supplied by No Eye Deer Farm
- Bugs 'N Slugs
- Animals Anonymous supplied by The Farm Barn
- The Bee Society
- Galloway Calves supplied by Talisha Rundle
- Baby Pigs
- Miniature Donkeys
- Alpacas
- Goat Milking Demonstrations Saturday and Sunday 10.30am and 3.30pm supplied by Kindness Croft
- Wool Display with hands on fleece to touch
- Miniature Goats display by Benclue Farm

VINTAGE ENGINES

Display by Gawler Machinery & Restorers and Gawler Tractor & Engine Assoc.

ENTERTAINMENT

Silent Disco - the most fun interactive wireless headphone party. Hosted by Gawler Broadcasting Association

YOUNG FARMERS CHALLENGE

Sunday at 3.30pm

Free competition open to teams of four people, must have at least one representative from each gender.

WOODCHOPPING DEMONSTRATIONS

Saturday and Sunday at 11.30am and 1.30pm

Mallee Axeman's Association of SA Inc

SHEEP DOG/SHEARING DEMONSTRATIONS

Saturday and Sunday at 12.30pm and 3pm

Jono's Sheep Shearing Services

CORPRALITE MAIN STAGE

@ttn Village Green

Dancing, singing, children shows, fire artist, bands

KENNARDS COMMUNITY STAGE

Rural Ag Zone

Rev-It Up Racing - Racing Simulator
School and community groups and upcoming artists

COMPETITIONS

Taylor & Forgie Arena

- Show Jumping
- Hacks and Breeds

Village Green

- Cattle (Saturday)
- Boer Goats (Sunday)
- Scarecrows

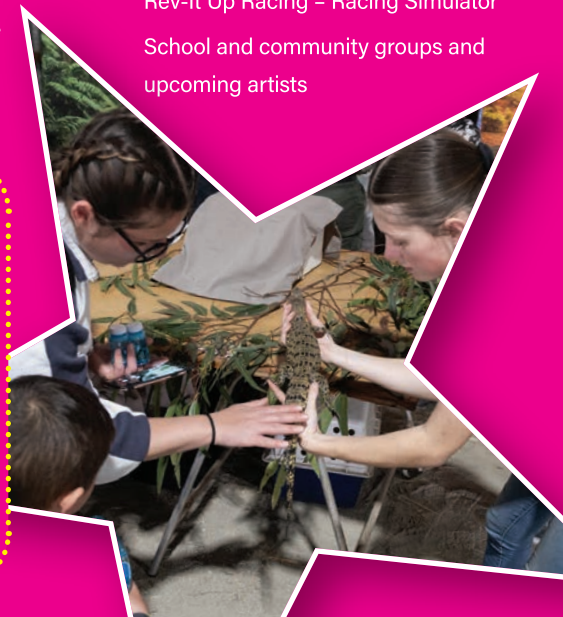
Rural Ag Zone

- Poultry (Saturday)
- Ute Muster (Sunday)
- Wool

Sports & Community Centre

- Cookery and Preserves
- Olive Oil

- Produce
- Art
- Needlework, Knitting and Dressmaking
- Photography
- School Posters
- Literacy
- Floriculture
- Handicrafts
- Junior Handicrafts



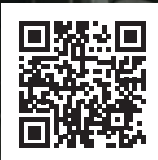
JOIN FOR

\$9.95*

PER WEEK!

FREE Crèche

SPRING SALE



*T&Cs apply.

FITNESS CENTRE starplex.com.au



at Trinity College

Keeping it fresh

FOLLOWING a stellar debut, the Farm Fresh section is back in a big way for the 2024 Gawler Show.

Last year's inaugural edition of the area was a smash hit and while this Show's version will be slightly different, the same amount of smiles are expected, if not more.

"It was a last-year initiative that we really thought was fantastic," Gawler Agricultural, Horticultural and Floricultural Society president Isaiah Tesselaar said.

"From all reports people were very happy with it last year and the traders were grateful for the opportunity to show off their products."

The area focuses on homegrown products and produce, which Mr Tesselaar believes ties back into the spirit of the Show, which is to show off what we have in our own backyard.

"It allowed us to celebrate what we're able to do in our state, the produce and the things that people are able to make here," he said.

"It ensures they get the recognition for being a local group because it's a dedicated area for SA based products."

Last year's section was held on the basketball courts, but Mr Tesselaar hopes a subtle change this year will help add to the farm feel.

"We've moved it this year from out in the basketball courts onto the @ttn Village Green so it's more included in the general feel of the Show," he said.

"Otherwise it will be very similar to how it was last year, but just with a bit more space to see it grow."

Head to the map to check out exactly where you need to go to get your hands on some top-drawer SA products.



A parade of Show time fun



EACH year there is a grand way to finish off a bumper weekend of Show time activity.

The Gawler Show's Grand Parade is one of the last things to see, as it makes its way around the showground's main oval, from 3pm on the Sunday.

Many of the Show's main attractions, including vehicles from the Touch-A-Truck experience, the Ute Muster, mascots, dancing groups, animals and more, come together for a fun send-off.

Gawler Show event coordinator Tanya Veldkamp said the parade is always a great experience for those involved and those watching from the sidelines.

"Gawler Show mascot Nixon is always a hit with the kids as he makes his way around, while everyone loves some of those bigger vehicles, like CFS trucks and tractors," she said.

This event has been growing in popularity each year since it was reintroduced in 2019 after a 15 year hiatus.

At the end of the parade at 3.15pm, the winners of the Show's Grand Lottery, including the lucky winner of the Peter Kittle Toyota Yaris Ascent Sport will be announced.

Expert Psychological Education and Prevention For Individuals and Business



DUCKS IN A ROW TRAININGS

www.ducksinarowtrainings.com.au
info@ducksinarowtrainings.com.au



Nixon celebrates 10 years

How does it feel to be turning 10? I bet time has flown...

I'm so excited to celebrate my 10th birthday with everyone at the Gawler Show, time really has flown by.

What are some of your fondest memories in your 10 years so far?

My fondest memories are the ones where I see families of many generations coming to experience and enjoy what we have to offer at the largest regional Show in South Australia.

What kind of friends have you made along the way?

I've met Barry from Boost Juice and Smokey the Koala from the CFS, along with all the friends I meet each year when they are here at the Show.

Can you tell us how you got your name in the first place?

Back in 2014, the Gawler Show introduced a fluffy new mascot and it needed a name, and that was me.

The mascot idea and running of the competition to name me was the brainchild of the Gawler Show Youth Team.

Kim Southern was the eventual winner, with the name 'NIXON'. Kim chose this name as the showgrounds are situated on Nixon Terrace in Gawler.

I have seen many families over the years, attend the Show and enjoy a wonderful weekend together.

I now also have my own social media pages; Facebook: Gawler Show Mascot - Nixon, and Instagram: gawlershowmascot so jump on and check it out.

How are you planning on celebrating your birthday at the Gawler Show this year?

I'm looking forward to everyone singing 'Happy Birthday' to me at the official opening at 11am Saturday on the Corpralite Main Stage and my 'meet & greet' sessions at 12pm and 2pm both days at the Kennards Community Stage with all the kids and families.

What are you looking forward to seeing?

All the animals, vintage machinery and all the

10



singing and dancing.

Why do you love coming back every year?

Because I have a quacking good time.

What's your favourite thing about the Show?

I love the fireworks, I love fire quackers.

**Harcourts
Gawler**

Contact Julie Thring for a **NO OBLIGATION** Rental Appraisal
0427 233 319
Available 7 days a week

2/29 Adelaide Road, Gawler South SA 5118
(08) 8523 3319 pm.gawler@harcourts.com.au hgpm.com.au

RETIRE IN GAWLER

Walk to the main street from secure independent living or choose to enjoy a country atmosphere with easy expressway access

- Independent retirement living; it's your home!
- Six villages in Gawler & Willaston
- Homes ranging from 1 to 3 bedrooms
- Maintenance of units & villages by GCRH staff, including emergency number; plus weekday administration support
- Live there as long as you want, no expiry date on agreements
- Homes refurbished prior to settlement
- Two types of entry agreements
- Pay no stamp duty or broker fees

See us at the **Gawler Show**

GAWLER community RETIREMENT HOMES

Phone 8523 4255
www.gcrh.org.au | admin@gcrh.org.au
19 Dawkins Ave, Willaston 5118

24 & 25 AUGUST 2024

GAWLER SHOW

2024 GRAND LOTTERY

SCAN TO BUY A TICKET

Win Me **GAWLER SHOW**
24th-25th AUG

Proudly supported by **Peter Kittle Toyota**

*Lottery license No. M14555

www.gawlershow.org.au/grand-lottery



HOPE
CHRISTIAN COLLEGE
Hope Opportunity Promise Excellence

Experience **HOPE**



**ENROLMENTS ARE FILLING
FAST FOR 2025 & BEYOND.**

**We provide a safe, caring and supportive
Reception-to-Year-12 Christian community
where your child can grow, thrive and
discover their place in the world.**

The passionate educators, support staff and students at Hope Christian College create a place where your child can flourish academically, socially and spiritually.



**FIND
OUT
MORE**

**Scan the QR or contact us
to book a school tour.**

-  enrolments@hopecc.sa.edu.au
-  (08) 8287 1111
-  hopecc.sa.edu.au



Dinosaurs in Gawler? Fair Dinkum

DINKUM Dinosaurs will be making its debut at the Gawler Show this year, bringing a prehistoric flavour to the festivities.

A mixture of entertainment and education, Dinkum Dinosaurs promise to have something for everyone.

"We have a combination of live performances and an educational dinosaur display," spokesperson Ally Fernandes said.

"The live performances include

'The Dinolarious' comedy ventriloquist show, which features the funniest and cutest dinosaur puppets in Australia, Tickles and Ozzie.

"They will bring giggles of delight from every kid – even the ones over the age of 21.

"Our dinosaur dance party features our four-metre long disco dancing dinosaur 'Dillo', and the kids get to dance with him. He loves three things: dancing, pats, and photos with his fans.

"Our baby dinosaur zoo is open all day with moving and roaring dinosaurs. We also have genuine fossils and sit-on dinosaurs for more photo opportunities."

Hailing from Perth, Western Australia, Dinkum Dinosaurs has successfully brought its show around the country thanks to a fact Ms Fernandes put simply: "Let's face it – what kid doesn't love dinosaurs?"

"The Gawler Show is a true family event and Dinkum Dinosaurs will make sure that even the youngest members of the community go away with great memories of their day at the Show."

Trail of treasures

THE Treasure Trail remains one of the best value experiences of the Gawler Show.

Organised by the Gawler Show Youth Committee, the Treasure Trail takes participants around to a variety of trade stalls where they can collect a 'treasure' and see all there is to see at the Show.

At just \$5, bags can be collected from the Gawler Show tent over the Show weekend or be pre-purchased online (at gawlershow.org.au).

Behind the mic

BEN LENNON

SHOWGOERS can rest easy knowing a prominent local voice will be on the mic this year, guiding them through a blockbuster weekend of family friendly activities.

Gawler councillor and young leader Ethan White's voice will be ringing through the ears of those in attendance, as the up-and-comer guides us through what is sure to be an excellent edition.

"For me, seeing thousands of members of our community out and about, with friends, family, neighbours, colleagues – that's what I'm most looking forward to," Ethan said of the experience.

"My favourite part of the Show has got to be the Agricultural Learning Centre – I mean, how often to you get to hold a snake, goat and a quokka?"

"It such a great opportunity, particularly for young people, to experience a taste of what it's like working on a farm or in an agricultural setting."

Ethan spends his day-to-day life concerning himself with some of the toughest issues facing Gawler's population through his role on the town's council.

The importance of events like the Gawler Show is not lost on him.

"They bring together every part of our community – from agriculture, community groups, businesses, exhibitors, performers, volunteers, schools, and everyone in between and showcase everything our wonderful town has on offer, all

together, for one weekend," he said of the Show.

"There is nothing else quite like it.

"The Gawler Show is also so important as it puts our community on showcase as we welcome thousands of visitors who come and contribute to our local economy for the weekend.

"A lot of people don't realise the Show is run entirely as a non-for-profit and driven by volunteers and the support of local businesses.

"Particularly as the Show celebrates its 170th year, I'd really encourage you to come along and show your support for this wonderful event that showcases the best of our community."

Ethan is no stranger to hosting these kinds of events, and showgoers can rest assured he has put the work in behind the scenes to deliver on the big stage.

"There's a fair bit of preparation for the emcee role, researching what is new at this year's Show, the entertainment on offer, meetings with the Show Society, and then a good sleep the night before," he said.

"I love every second of it, so it definitely doesn't feel like work.

"I'll be everywhere at the Show! You'll find me roving around, interviewing exhibitors, traders and showgoers, so just keep an eye out and come say hello."



See us at this year's GAWLER SHOW!



View our Full Range of Showbags!

SHOWBAGS
.com.au

SHOWBAGS

BLUEY

Bluey Activity Set,
Bluey Backpack,
Bluey Ball,
Bluey Cooler Bag,
Bluey Drink Bottle,
Bluey Sunglasses,
Bluey Headband
and a Bluey
Non Woven Bag



HELLO KITTY

Hello Kitty Coin Purse,
Hello Kitty Drink Bottle,
Hello Kitty Duffle Bag,
Hello Kitty Knee High Socks,
Hello Kitty Nail Stickers,
Hello Kitty Notebook,
Hello Kitty Pen Set,
Hello Kitty Stick On Nails,
Hello Kitty Stickers,
Hello Kitty Trinket Boxes and
and a Hello Kitty
Non Woven Bag



CALL OF DUTY

Call Of Duty Cap,
Call Of Duty Coasters,
Call Of Duty Duffle Bag,
Call Of Duty Mouse Pad,
Call Of Duty Notebook,
Call Of Duty Tech Decals,
Call Of Duty Air Freshener,
Call Of Duty Socks
and a Call Of Duty Non
Woven Bag



PAW PATROL

Paw Patrol Activity Set,
Paw Patrol Backpack,
Paw Patrol Bento Box,
Paw Patrol Drink Bottle,
Paw Patrol Wallet,
Paw Patrol Flying Disc,
Paw Patrol Slap Band
and a Paw Patrol Non
Woven Bag



KUROMI

Kuromi Bracelet,
Kuromi Eye Mask,
Kuromi Drink Bottle,
Kuromi Hair Clip,
Kuromi Handbag,
Kuromi Headband,
Kuromi Necklace Set,
Kuromi Socks and a
Kuromi Non
Woven Bag



HOT WHEELS

Hot Wheels Backpack,
Hot Wheels Cap,
Hot Wheels Colouring Book,
Hot Wheels Poster,
Hot Wheels Keyring,
Hot Wheels Slap Band,
Hot Wheels Sticket Sheet,
Hot Wheels Vehicle
and a Hot Wheels
Non Woven Bag



RICK AND MORTY

Rick And Morty Backpack,
Rick And Morty Bottle Opener,
Rick And Morty Bucket Hat,
Rick And Morty Card Game,
Rick And Morty Cooler Bag,
Rick And Morty Decals,
Rick And Morty Drink Cooler,
Rick And Morty Keychain,
Rick And Morty Socks
and a Rick And Morty
Non Woven Bag



BUBBLE TEA

Bubble Tea Backpack,
Bubble Tea Cup,
Bubble Tea Mini Notebook Set,
Bubble Tea Phone Charm,
Bubble Tea Pen Set,
Bubble Tea Pencil Case,
Bubble Tea Slippers,
Bubble Tea Stickers
and a Bubble Tea
Non Woven Bag



ULTIMATE FIDGETS

Stress Ball, Pop Rocker,
Fidget Windmill Pen,
Wacky Spinner, Hand Pop,
Fidget Shapes, Klick Klacks,
Stretchy Straps, Fidget Mat,
Pop Ball 7cm, Stretchy Worms,
Rainbow Circle, Snake Puzzle,
Large, Rotating Maze and a
Ultimate Fidgets Mini Non
Woven Bag



WEDNESDAY

Wednesday Backpack,
Wednesday Badges,
Wednesday Choker Set,
Wednesday Cosmetic Bag,
Wednesday Keyring,
Wednesday Notebook,
Wednesday Socks,
Wednesday Tech Decals,
Wednesday Tin Locker
and a Wednesday
Non Woven Bag



ENTRY TO THE SHOW IS THROUGH GATES 4 AND 7

1. Showbags
2. Vehicle Display/ Ute Muster
3. Community Zone
4. Pony Rides
5. Steam Engines and Old Tractors
6. Touch-A-Truck
7. Goats and Poultry
8. Agricultural Learning Centre

9. Wool Display
10. Blacksmiths
11. Trade/General Interest
12. Catering Area
13. Cattle Ring
14. Farm Fresh
15. Woodchopping Sheepdog and Shearing Demonstration Silent Disco
16. Corpralite Main Entertainment Stage
17. Licensed Bar
18. Treasure Trail Start
19. Information Booth Car Lottery Tickets Nixon's Animal Adventure HQ
20. Exhibition Halls
21. Horses In Action



© Map copyright of The Bunyip 2024, not to be reproduced without permission.

Grand Lottery returns

AIDAN CURTIS

THERE will be a huge prize up for grabs during this year's Gawler Show Grand Lottery. Showgoers will have the chance to win a brand new Toyota Yaris Ascent Sport as part of the 2024 Grand Lottery.

With tickets now on sale, Gawler Agricultural, Horticultural and Floriculture Society committee member Steve Coulter said snapping up a ticket was a great way to support the Gawler Show.

He said as a not-for-profit organisation, raffle sales mostly go towards maintaining the infrastructure at the showgrounds.

"Most of the money we've spent from the raffle so far has gone on to areas like the Ag Centre, which is one of the major sheds on the grounds," he said.

"We've tidied a lot of that up, we've had to buy lighting which was put in there, we purchased a cattle van last year which makes it a lot easier for the cattle to get in and out of the grounds.

"We've had to spend some money on the upkeep of the Show office – the only infrastructure we actually own is the Show office and a couple of the sheds."

He said raffle sales also went towards supporting the volunteer community groups which support the Gawler Show.

"The Show isn't about us, it's about bringing the community together. There's a lot of things that come out of the Show where we support the local community groups," he said.

"They help us with the gates, with car parking, on the ticket booths, so money that comes in from the raffle also helps pay for supporting community groups."

With around 17,000 tickets for the raffle sold each year, Mr Coulter encouraged the community to get in early to maximise their chances for a prize.

He also said getting involved in the Gawler Agricultural, Horticultural and Floriculture Society committee was another great way to support the Show.

"Being involved in the committee is probably the most satisfying for me, personally," he said.

"The Show is great for the community to come along and be involved in the agricultural things and the rides, but for me personally it's more the behind the scenes. "The fundraising, the various portfolios that need to be filled to get the Show up and running."

Grand Lottery tickets are available online via RaffleTix, with sales to close at 3pm on August 25.

Other prizes up for grabs include \$3000 cash, \$1000 worth of Drakes gift cards and a \$500 Beyond Bank community reward account.



WIN ME!

PRIZES

Toyota Yaris Ascent Sport, proudly supported by Peter Kittle Toyota. Stunning Silver in colour, automatic transmission, 2WD, 1.5L Petrol, includes all on road costs and 12 months registration.

Valued at \$27,018

\$3,000 cash prize donated by the Gawler Agricultural, Horticultural & Floricultural Society Inc

\$3,000

\$1,000 worth of Gift Cards to spend at Drakes supermarkets.

\$1,000

\$500 Community reward account provided by Beyond Bank Gawler

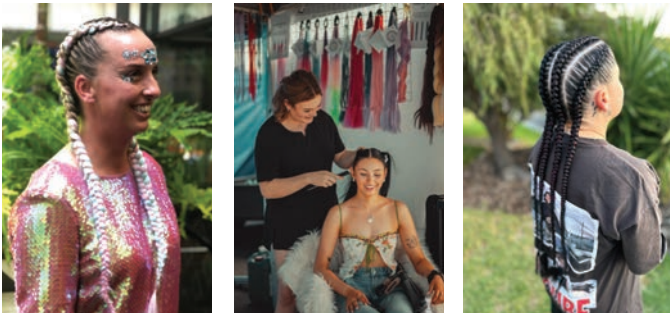
\$500

3 month membership to Yoga and Wellbeing Gawler

\$330

Upstyle

HAIR • LASH • BEAUTY



LOCATED NEAR THE SHOWBAGS STAND

Pre-book your appointment now
Contact Indiana on 0499 155 467

HIRE US FOR AN EVENT • BUY OUR PRODUCTS

PROUD STOCKISTS OF



T56478

The Bunyip

YOUR LOCAL NEWSPAPER SINCE 1863

PROUD SPONSOR OF THE GAWLER SHOW



GET THE BUNYIP DELIVERED TO YOUR DOOR, ASK US HOW ON...

8522 1233

bunyippress.com.au



Office at 120 Murray Street, Gawler | Email: advertising@bunyippress.com.au

F024844



The community stage will showcase some of the best Gawler has to offer at this year's Gawler Show.
PHOTOS: Gawler Show Committee



PHOTO: File

Our backyard in the spotlight

THROUGHOUT its 170-year history, community has remained one of the pillars of the Gawler Show and this year's edition aims to recognise that more than ever.

Performances from local schools and community groups have been a staple of Show life over the years and the 2024 edition will see them come together as one.

The debut of the Kennards Community Stage will see the abundance of local acts all in the same spot throughout the two days of the 2024 Gawler Show.

The change has been made to give Gawler locals the spotlight they deserve and Gawler Agricultural, Horticultural and Floricultural Society president Isaiah Tesselaar is excited to see the youngsters blossom.

"Community is a big part of the Gawler Show. The community groups have been competing against our main acts over the weekend, so instead we thought we'd have a dedicated space to

give those groups the time they need," he said. "It definitely helps [draw attention to them] and gives them a space to show off their acts."

Performances from local youths holds plenty of nostalgic value for Mr Tesselaar, who hope this year's performers will look back on their time at the Show fondly, just as he does today.

"It's always been a major part of the Show. As a kid I used to perform with schools and things like that and it was always fantastic to be out there," he said.

"It's great to be able to show off what our local schools and groups are able to achieve.

"We will have school choirs, some dance studios, the town band and the youth band from Gawler council.

"They will all be performing which should be great."

The Kennards Community Stage will showcase many talents from around the region.



BURNS
CEILING & BUILDING SUPPLIES P/L



BUILDING RENOVATING EXTENDING

DIY or we can supply and install

Contractors & Suppliers of:

- Plasterboard & Accessories
- Fibre Cement Sheeting
- Rondo Steel Building Systems
- Insulation & Foils

Email: gawler@burnsceilings.com.au
for a free no obligation quote

BLD 53653

20 Bernard Court, Gawler Belt 8523 0848 www.burnsceilings.com.au

FLUID

PLUMBING SERVICES

• COMMERCIAL • INDUSTRIAL • DOMESTIC

PH 0412 833 694
or 8522 5116
www.fluidplumbing.com



MEMBER

Available 24/7

Service agents for



Lic No. PGE176814

ASHTON HURN MP

MEMBER FOR SCHUBERT



Best wishes for the 2024 Gawler Show!

CONTACT ME ANYTIME!

 [AshtonHurnSchubert](https://www.facebook.com/AshtonHurnSchubert)

 129A Murray Street, Tanunda

 schubert@parliament.sa.gov.au

 8563 3636

 ashtonhurn.com.au

 [ashton_hurn](https://www.instagram.com/ashton_hurn)

Putting **Schubert first.**

Show to be a thrilling ride

THE Gawler Show's sideshow alley and rides will be the place to try your luck and make memories to last a lifetime.

The arena of both old and modern-style carnival fun is brought to the Gawler Show each year by the Showmen's Guild.

Traveling showmen and women have been supporting country Shows all over Australia for many years, today supplying amusement rides and sideshow games to about 30 country Shows and many other fairs and festival.

In South Australia, the Showmen's Guild was formed in 1936 with almost 100 per cent of current Guild members being descendants of original members.

While the 2024 line-up of rides is still being finalised, showgoers can expect the fun of modern rides such as the Alibaba, Hard Rock, Kamikaze, Hurricane, Cyclone, Extreme Thriller and many more.



You have goat to check this out

THE Kindness Craft is taking its show on the road at the 2024 Gawler Show.

It operates as a woman-owned, self-sufficient, off-grid goat dairy farm nestled in the serene countryside of Allendale North.

Their specialty lies in crafting exquisite handmade goat's milk soap.

The renowned herd of Anglo Nubian goats consistently produce exceptionally creamy milk with a high butterfat content which gives the soap a luxurious feel and amazing skin benefits.

In addition to this main ingredient, The Kindness Craft meticulously selects locally sourced oils, honey, and clays from nearby small-scale producers to ensure the utmost quality and freshness in every bar of soap.

The Kindness Craft will be doing milking demonstrations in the Agricultural Learning Centre on both Saturday and Sunday in the morning and afternoon.

There will also be a soap making demonstration on Saturday, so come along and visit them, if you want to learn about all things goat, soap and living a self-sufficient lifestyle.



BORN FROM THE NEED FOR A GOOD MEAD

Just like a fine wine, only better!

See you at the Gawler Show

OUR MEADS:

- Rum & Raisin
- White Owl
- Elderflower
- Lemon Myrtle
- Apple & Raspberry/Cherry
- Cherry Delight
- Bourbon Barrel
- Turkish Delight
- Spiced Viking Blood
- Freya
- Bochet
- Blackberry Blues
- Honey/Spiced Honey
- Spiced Apple
- Viking Blood
- Chocolate & Orange/Apricot
- Chocolate Chilli

... and many more!



Over the course of the last 12 or so years, we have played with, experimented with and Tested (consumed) many varied meads to arrive at the range of specialised drinks we now have.

121 Somerton Road, Bibaringa | (08) 7081 0141

0481 455 909 | Mead@ThistleMeadery.com.au | Lic No. 57611886



TS6498

ENTERTAINMENT PROGRAM



SATURDAY, AUGUST 24

Time	Event	Location	Time	Event	Location
9.30	Hewett Primary School Choir	Kennards Community Stage	2.00	Funny Farmers	Corpralite Main Stage
10.00	Alana's Dance Studio	Corpralite Main Stage	2.30	Dinkum Dinosaurs	@ttn Village Green
10.00	Dinkum Dinosaurs	@ttn Village Green	2.30	Abbey Dale	Kennards Community Stage
10.30	Dairy Goat Milking Demonstration, The Kindness Croft	Agricultural Learning Centre	3.00	Gawler Academy of Dance	Corpralite Main Stage
10.30	Dance Fitness with Selina	Kennards Community Stage	3.30	Sheep Dog/Shearing Demonstration, Jono's Sheep Shearing Services	@ttn Village Green
11.00	Official Opening, Opened by Young Rural Ambassador State Winner, Performance by Hewett Primary School	Corpralite Main Stage	3.30	Dairy Goat Milking Demonstration, The Kindness Croft	Agricultural Learning Centre
11.30	Woodchopping Demonstrations, Mallee Axeman's Association of SA Inc	@ttn Village Green	3.30	K-Pop Group - Lil' Star Team	Kennards Community Stage
11.30	Craigmore High School	Kennards Community Stage	4.00	Kozmik's Space Show	Corpralite Main Stage
12.00	Dinkum Dinosaurs	@ttn Village Green	4.30	Dinkum Dinosaurs	@ttn Village Green
12.00	Funny Farmers	Corpralite Main Stage	5.00	Londyn Forman - DJ	Corpralite Main Stage
12.30	Sheep Dog/Shearing Demonstration, Jono's Sheep Shearing Services	@ttn Village Green	6.00	Heatwave	Corpralite Main Stage
12.30	First Taekwondo	Kennards Community Stage	7.00	Kraken Fire Art	Corpralite Main Stage
1.00	Sun of Africa, Including a drumming workshop	Corpralite Main Stage	7.30	Impact Entertainment, Presented by TIDC Performing Arts Studio	Corpralite Main Stage
1.30	Woodchopping Demonstrations Mallee Axeman's Association of SA Inc	@ttn Village Green	8.00	Fireworks, Proudly Sponsored by Taylor & Forgie, Brought to you by Howard & Sons	Taylor & Forgie Arena
1.30	Two Wells Band	Kennards Community Stage	8.15	Londyn Forman - DJ	Corpralite Main Stage

SUNDAY, AUGUST 25

Time	Event	Location	Time	Event	Location
9.30	Gawler Youth Band	Kennards Community Stage	1.30	Woodchopping Demonstrations, Mallee Axeman's Association of SA Inc	@ttn Village Green
10.00	MTM Allstar Cheerleading	Corpralite Main Stage	1.30	Gawler Town Band	Kennards Community Stage
10.00	Dinkum Dinosaurs	@ttn Village Green	2.00	Dance Crew SA	Corpralite Main Stage
10.30	Dairy Goat Milking Demonstration, The Kindness Croft	Agricultural Learning Centre	2.00	Dinkum Dinosaurs	@ttn Village Green
10.30	Sing Australia	Kennards Community Stage	2.30	Sheep Dog/Shearing Demonstration, Jono's Sheep Shearing Services	@ttn Village Green
11.00	Funny Farmers	Corpralite Main Stage	2.30	Abbey Dale	Kennards Community Stage
11.30	Woodchopping Demonstrations, Mallee Axeman's Association of SA Inc	@ttn Village Green	3.00	Grand Parade (inc Grand Lottery Draw at 3.15)	Taylor & Forgie Arena
11.30	Dance Fitness with Selina	Kennards Community Stage	3.00	K-Pop Group - Lil' Star Team	Corpralite Main Stage
12.00	Dinkum Dinosaurs	@ttn Village Green	3.30	Dairy Goat Milking Demonstration, The Kindness Croft	Agricultural Learning Centre
12.00	Emerauld	Corpralite Main Stage	3.30	Young Farmers Challenge	Taylor & Forgie Arena
12.30	Sheep Dog/Shearing Demonstration, Jono's Sheep Shearing Services	@ttn Village Green	3.30	Dinkum Dinosaurs	@ttn Village Green
12.30	First Taekwondo	Kennards Community Stage	3.30	Dance Fitness with Selina	Kennards Community Stage
1.00	Emerauld & Band	Corpralite Main Stage	4.00	Solly G Music	Corpralite Main Stage



'Meet & Greet' Nixon and the Fairy Tale Princess and Prince

Saturday and Sunday at the Kennards Community Stage

11.00	Fairy Tale Prince & Princesses
12.00	Nixon - Show Mascot
1.00	Fairy Tale Prince & Princesses
2.00	Nixon - Show Mascot

Volunteer value immeasurable

WHILE thousands will flood through the gates of the Gawler Show this weekend for a day or two of family fun, a select group of around 150 people will be making the whole thing happen.

Just two part-time employees function within the Show committee and its supporting cast, with the rest of the crew volunteering their time free-of-charge.

Such a massive operation requires a plethora of moving parts, from organising entertainment to setting things up, to ticketing and spreading the word, anything and everything is run by volunteers.

The value of these kind-hearted people is not lost on Gawler Agricultural, Horticultural and Floricultural Society president Isaiah Tesselaar, who himself plays a large part in putting on the event.

"It would not be possible at all to hold the Show without the work of our volunteers," he said. "There's probably 150 people over the weekend that will come through and help us in all areas across competitions, heats, ticketing and all of those things.

"Without them it wouldn't be possible. All the setup, the planning and generating of ideas comes from our volunteers.

"The community is very much still driving the Show forward.

We're lucky enough to have two part-time staff, but everything else is done by volunteers."

With that in mind, if you're strolling through the Agricultural Learning Centre or grabbing a bite to eat and you see someone dedicating their time to making things happen, give them a friendly wave or even a thank you as without them, the Show would not go on.

The Touch-A-Truck section is back for 2024.

PHOTO: Gawler Show Committee



Keep on trucking

A SHOW favourite is back for another year which should have motoring fans of all ages gearing up for an exciting weekend.

Regarded by many as one of the stars of the Show, the Touch-A-Truck area is set to bring a wide range of exciting opportunities to this year's event.

Committee member Jimmy Rundle has been busily piecing together the display, which looks set to wow patrons.

"We're going to have a couple of prime mover trucks, possibly a drag car or possibly a drag bike depending on a few things," he said.

"It will be either that or two drag cars, so there's a couple of

options lined up.

"We're having the CFS there and the SES as well. We'll have a police car there too for kids to jump in like we did last year.

"We'll have an army truck and an army tank. We've got vintage machinery there."

While an eye-catching display remains a high priority, Mr Rundle believes that there are plenty of lessons on offer for youngsters interested in the machinery.

"All the kids, mums and dads can come and have a look around," he said.

"Obviously prime movers, SES and the CFS, they give you a bit of a talk through what happens in certain scenarios as well.

"We'll have a big weather station there as well which gives you automatic updates, so that will be cool for the kids.

"Even the drag cars and that, it's an added bonus for them to have a look.

"For myself as a kid I would've

been pretty pumped about stuff like a drag car – kids love that stuff.

"We've got a heap of vintage machinery coming as well. Being the 170th year, the historic things like that will be good for people to have a look at."

This year's section featuring the mentioned drawcards is an upgrade on last year's offerings and the Show Society is keen to go bigger and better every year.

"The army tank is something different," Mr Rundle said.

"Last year we had a couple of trucks and tractors and cars out there and that was about it.

"We're keen to keep getting something different each year to get people more involved.

"Where we've got the area set up, at the back we've got the Agricultural Learning Centre which runs heaps of farm animals and things like that, with some machinery as well, and then the next shed over is the poultry and goat shed."

blackbird
— accountants —

Wishing all a very Happy Show

A big thank you to all our clients and the community for supporting our business.

21 Fourth Street, Gawler South 8522 2022 www.blackbirdsa.com.au

PW2409

LEWIS & SHANE

LAWYERS

PROFESSIONAL & FRIENDLY LEGAL ADVICE

PHONE 8523 4205

53 Adelaide Road, Gawler South

www.lewisandshane.com.au

TS6412

MATT BURNELL^{MP}
FEDERAL MEMBER FOR SPENCE

**Proud patron
of the 2024
Gawler Show**

✉ Matt.Burnell.MP@aph.gov.au
☎ 08 8258 6300 📷 [MattBurnellMP](https://www.facebook.com/MattBurnellMP)

Authorised by M. Burnell MP, ALP, 8/2-10 James St, Salisbury SA 5108



Are You Drowning In Dirty Laundry?

Call Us Today.
We Wash, Dry, Fold and Iron!

Free
pick up
and
delivery

Meet us at the
Gawler Show!




Jim's
Laundry Services

FRANCHISES AVAILABLE

jimslaundryservices.com.au

131 546



REGISTERED
NDIS
PROVIDER

Shearing demonstrations return

Jono's Sheep Shearing Services owner and operator Jonathan Liebelt is looking forward to once again sharing his knowledge with the crowd at the Gawler Show. PHOTOS: File



★ AIDAN CURTIS

ENTERTAINMENT and education will once again cross paths at this year's Gawler Show with the return of Jono's Sheep Shearing Services.

Jono's Sheep Shearing Services is back for the second time, once again bringing a passion for agricultural education to the Gawler Show.

Owner and operator Jonathan Liebelt will be on hand with a range of demonstrations for the crowd, including practical sheep shearing shows, working dogs, and tips on farm management.

Mr Liebelt said he is very excited to come back for his second Gawler Show, with the engagement from Gawler people one of his biggest drawcards.

"I always like the crowds out there because every area has got a very different type of crowd, and the Gawler Show is a very interactive crowd," he said.

"We always get lots of laughs, questions after the shows about how we work our dogs and how we shear our sheep.

"They're always very interactive

and very involved in what we do."

While Mr Liebelt was "not exactly sure" how many demonstrations he would be doing throughout the Gawler Show, he said he would have ample opportunities to pass on his knowledge to any who stopped to listen.

"Kelly will be there again – she's the working dog to round the sheep up. We'll be there both days to showcase both Kelly and how we shear the sheep as well," he said.

"That's always our key focus, education for anyone of any age.

"It's just teaching people about how we look after our sheep, how we work our sheep and how we manage our property, and the tools we use to be able to run our farm."

Mr Liebelt said he was not expecting to get much of an opportunity to "go for a wander" at the Show, but he still expected to enjoy himself in Gawler.

"The Gawler Show is a fun one, especially because it's two days and you get a good variety coming through as well," he said.



Don't miss out
Don't miss out
Don't miss out

Don't monkey around you'd be bananas to miss out

Discover us at Oasis Garden Village and the secret to hassle free retirement

Hutchinson Road, Gawler East (enter first right gate 1)

If you enjoy your independence, or the company of others, and are looking for peace of mind and security, you will feel at home at **Oasis Garden Retirement Village**. Next door neighbour to the Gawler Hospital and located close to the centre of Gawler.

- Check out this link: <https://mattbunder.raywhite.com/sa/gawler-east/2975473/>
- Appointments and Units available. All rooms have an ensuite. Pets welcome
- Weekly full room service, linen provided
- Quality meals, breakfast, lunch and tea. Diet restrictions catered
- Car parking space
- Private vehicle transfers available for local appointments, shopping trips
- On site managers 24 / 7 – emergency call out
- Extra care assistance with sourcing
- All rooms freshly renovated with new flooring. Oasis has a beautiful tropical style garden setting.

Call any day to arrange a visit
Karen and David will be happy to show you around
Oasis Garden Village 8522 4145 / 0476 654 209



www.oasisgardenvillage.com.au | office@oasisgardenvillage.net.au



Visit SA Power Networks at the Gawler Show!

Have a photo as a Power worker!

Come and have a chat about how we:

- Restore power
- Prevent outages and,
- How you can save energy in your home – bring your bill!

Everyone is welcome!

We can also help you sign up for SMS/email alerts, so you can stay up to date during planned and unplanned outages.



Empowering South Australia

The team brings sounds of West Africa with beats of the djembe and the footwork of traditional dance.

PHOTO: Mark Willoughby



The Sun of Africa drums up excitement

★ IMOGEN EVANS

THE SUN of Africa is set to shine on Gawler as part of this year's massive Show line-up.

Sun of Africa Drum & Dance Ensemble is Adelaide's top drumming and dance group who brings their cultural sounds across the state.

The team is making a special stop at Gawler this year to spread the electric energy of African dance and music bringing culture through the universal language of movement and sound.

The team brings its performance from the outback of the landscapes of West Africa with beats of the djembe and the footwork of traditional dance.

The group's Jean Marc said the team is thrilled and honoured to be performing at the Gawler Show.

"This event is a fantastic opportunity for us to share the rich and vibrant traditions of African dance with a wider audience," he said.

"We are excited to contribute to the cultural tapestry of the Show and are eagerly anticipating the chance to engage with the community of Gawler."

Audiences can expect an energetic and captivating performance that showcases the

diversity and depth of African dance traditions.

"Our repertoire includes a variety of dances that highlight different regions and cultures within Africa, characterised by dynamic movements, rhythmic drumming, traditional masks and colourful costumes," Jean said.

"Each performance tells a story and invites the audience to experience the joy and spirit of African culture.

"We aim to provide a memorable and inspiring experience that resonates with people of all ages."

Make sure to get down to this year's Gawler Show to witness the powerful beats of African drums and traditional performance.



PHOTO: Imogen Evans

Roseworthy Veterinary Hospital



Providing small animal, equine and livestock consultations, specialist services, emergency and critical care hospitalisation and referrals.

Visit us at this years Gawler Show - prizes to be won!

1454 Mudla Wirra Road,
Roseworthy SA 5371

www.adelaide.edu.au/vet/
[vet.reception@adelaide.edu.au](mailto:veter.reception@adelaide.edu.au)
[@RoseworthyVeterinaryHospital](https://www.instagram.com/RoseworthyVeterinaryHospital)

(08) 8313 1999





The Artist Blacksmiths Association of South Australia is setting up a commemorative plaque to recognise the whopping 170-year milestone.

PHOTOS: Supplied



Blacksmiths ready to steel the show

★ JEM NASH

AS the Gawler Show celebrates its 170th year in 2024, the Artist Blacksmiths Association South Australia will be manufacturing a commemorative plaque to recognise the milestone.

The association has been involved with the Show for multiple years, conducting demonstrations and also creating small models and toys to share with the children.

"We usually run a couple of competitions for those within the club, just to entice people to attend the Show as well," Artists Blacksmith Association of SA instructor and life member John Fergus said.

Mr Fergus said there is plenty of crowd interaction when those competitions are run as well.

"We actually get the crowd to vote," he said.

"We have marbles they put in a cup next to the ones they vote for... so that gives them a little bit of interaction as well."

Mr Fergus said they are currently working on some designs for the commemorative plaque, which will be completed on the weekend of the Show.

He said attending regional Shows is always a popular activity for the association's members.

"We do a lot of the country Shows around the state, just to let young people see what blacksmithing is all about," he said.

"There's a fair bit of interest about,"

Mr Fergus said the Artists Blacksmith Association of SA is a "club for everyone" and is open for anyone

with an interest in blacksmithing. He said the club has a great home base at Penfield with everything a budding blacksmith needs.

"[There is] a few guys that are fairly experienced as well so if anyone needs a hand, we'll work together," he said.

The Artist Blacksmiths Association South Australia are again excited to be providing demonstrations throughout both days of the Show. You will find them in our Rural Ag Zone (near the Agricultural Learning Centre) between 9am and 5pm.



PHOTO: File



Hard hitting axe-tion returns

★ JEM NASH

ALWAYS a popular stop at the Gawler Show, woodchopping is back to showcase the unique and old-time sport.

A staple at the Show for many years, Mallee Axeman's Association will have multiple members give a woodchopping demonstration across both days of the weekend.

"There will be cutting, both underhand and standing blocks," Mallee Axeman's Association's Barry Schulz said.

"Underhand is where you stand on the log and cut between your feet, and the standing block has the logs mounted in a steel frame so it's vertical, more like a tree, and you cut it that way."

The axemen will also demonstrate the hard hitting variant of the sport, where it comes down to how many

strikes it takes to break through the wood, as opposed to the time.

"They'll explain that as you go through because people can actually see where the axe is landing," Mr Schulz said.

"Because there is a system, you don't just stand there and bash away, there is a very specific system which they explain over the PA."

The sport has been through a number of changes in recent years, as leg protection - which includes stainless steel socks inside the shoes and a chainmail up the front of the leg - has recently become mandatory in Australia and from the beginning of next year, will be mandatory right across the board.

Mr Schulz said the club's demonstrations are a great opportunity for people to see an

"extreme" sport that is not as accessible anymore.

"It's a chance to show an old-time sport," he said.

"It's something that's not as common as it certainly once was."

The Mallee Axeman's Association try to get to a handful of regional Shows each year.

At a time when some country Shows are struggling, Mr Schulz said it is always great to head to the Gawler Show, which continues to thrive.

"It's great that Gawler gets the local community support," he said.

Woodchopping demonstrations will be at the @ttn Village Green on both days at 11.30am and 1.30pm.

Fostering:

You never know where

the road could take you.



LUTHERAN
CARE



**BE
THE
VILLAGE**
foster care
fostercare.lutherancare.org.au



SOLARESS

EXPERTS IN ALL THINGS ELECTRICAL, SOLAR AND BATTERIES!



From, Switch Board Upgrades, Exterior and interior Lighting, Ceiling Fans, Power-points, USB Points, Antennas, Data Points, New House Wiring, Shed Wiring, IXL 3 in 1's; we do it all and the list goes on!



Solar power can reduce your electricity bill and safeguard you from escalating energy prices. Our knowledge on solar means you can be confident that you will get the best solar system for your home.



Solar batteries are an essential part of any solar energy system. Store the extra energy that is generated during the day. Speak to the guys at Solaress today to see how you solar batteries can benefit you.

GOT A QUESTION? WE'RE HERE TO HELP!

COME AND SAY G'DAY TO THE SOLARESS TEAM AT THIS YEARS GAWLER SHOW.

MAJOR PARTNER OF THE 2024 GAWLER SHOW

SOLARESS

M. 0430 577 543 W. www.solaress.net.au E. james@solaress.net.au



@solaress



@solaress

Lic No. PGE206467