

2024
OFFICIAL
PROGRAM

It's Show Time

GAWLER SHOW

AUGUST 24 ★ AUGUST 25



Trinity College
**Roseworthy
Now Open**

2025 Scholarships Now Available



Visit our website for details... www.trinity.sa.edu.au

8695G35

PRESIDENT'S MESSAGE

WELCOME to our official Show program, where we reflect on the successes of 2023 and look forward to an exciting future.

This year, the society proudly celebrates 170 years since its establishment on October 2, 1854.

It all began after a special public meeting convened at the Globe Inn (now the Kingsford Hotel).

The society was established as the central point of a large agricultural district, where townspeople gathered to meet, celebrate and trade.

The inaugural Show highlighted the region's strengths in crops, machinery and pastoral activities.

The founding committee members were highly regarded individuals in Gawler, including several local councillors who recognised the value of bringing a large festival to the region.

Last year was truly exceptional for us, marked by the introduction of new attractions that captivated our audience.

The inaugural Farm Fresh area celebrated South Australian made products, while the Newkree Educational Farm delighted visitors of all ages,

educating them on the origins of their food.

With around 30,000 enthusiastic visitors, our event continues to grow in popularity and impact.

The launch of our online competitions platform, Showday, streamlined our operations, allowing us to focus more on enhancing our competitions and sourcing prizes.

This resulted in over 3000 entries across our indoor and livestock sections, showcasing the talent and passion of our participants.

This year, the Grand Lottery continues to support our efforts, contributing significantly to our success.

Last year, the Grand Lottery generated a profit of \$30,000, which has been reinvested into essential improvements thanks to the generous support of our sponsors.

These funds have enabled us to make improvements to our office and sheds, procure new cattle and sheep panels and upgrade our storage equipment for improved safety and efficiency.

In addition, this year sees the return of the community stage, bringing even more entertainment options to families.

Local bands, and school

groups will lead the way on the community stage, while our main stage will see many favourites return like The Funny Farmers and Kozmik's Space Show, and plenty of new and exciting acts like The Sun of Africa.

As we move forward, we remain committed to building on this rich heritage, fostering innovation and expanding our offerings.

Together, we are shaping a bright future for our show, reinforcing its financial stability and ensuring its continued growth.

Thank you for being a part of our journey. I would like to express my sincere gratitude to all our wonderful sponsors, patrons, volunteers, community groups, committee members and incredible staff who make this event possible.

Your support and dedication is truly appreciated.

We can't wait to see you on August 24 and 25 for an incredible weekend at South Australia's largest regional Show.

*Isaiah Tesselaar,
President, Gawler
Agricultural, Horticultural
and Floricultural Society Inc.*



TICKETING INFO

Saturday, August 24 9am to 9pm
Sunday, August 25 9am to 5pm

Purchase tickets at the gate (EFTPOS available) or order online to skip the queue.

Adult \$20.00

Concession \$15.00

Child \$10.00

Family \$60.00

2 Adults and 3 Children aged 0-15 years

Child under 5 FREE

Become a member

Membership tickets can be purchased at gawlershow.org.au and offer the opportunity to become a part of the Gawler Show community.

Benefits include a reduced price on entry to the Show and voting rights at Gawler Show Special General Meetings and at the Annual General Meeting, to be held in March, 2025.

Getting to the Show

The Gawler Showground is located at Princes Park, off Nixon Terrace. Gates are only a short 300 metre walk from the closest train station, 'Gawler Oval'.

If you're driving, keep an eye out for off-street parking areas that directly benefit the local community. Community groups will operate three carparks across Lawrence Ave (\$10), Henry Chenoweth Park (\$10) and Goose Island (\$5).

www.gawlershow.org.au

GAWLER SHOW



The Bunyip



EXCLUSIVE PUBLICATION PROUDLY CREATED BY THE BUNYIP NEWSPAPER IN PARTNERSHIP WITH GAWLER AH&F SOCIETY
120 Murray Street, Gawler SA 5118 | Phone (08) 8522 1233 | office@bunyippress.com.au | www.bunyippress.com.au
Editorial: Ben Lennon, Aidan Curtis, Jem Nash, Imogen Evans and Liam Phillips.
Graphic Design: Cassie Mower. **Advertising:** Tony Swan, Paul Miles, Claire Abbott.



We don't sell
houses.
We sell homes

List and sell with Ray White Gawler East and we'll refer \$500 back to your chosen sporting or community club

RayWhite
GAWLER EAST

Shop B03, 4 Mullamar Way, Gawler East, SA 5118
(08) 7806 8227

RLA 327615

ENTERTAINMENT PROGRAM

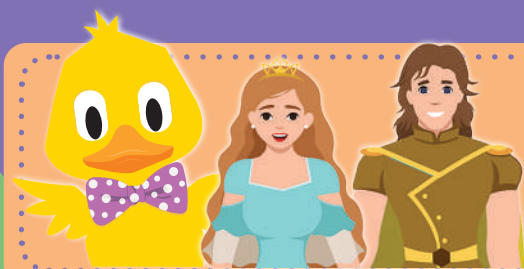


SATURDAY, AUGUST 24

Time	Event	Location	Time	Event	Location
9.30	Hewett Primary School Choir	Kennards Community Stage	2.00	Funny Farmers	Corpralite Main Stage
10.00	Alana's Dance Studio	Corpralite Main Stage	2.30	Dinkum Dinosaurs	Village Green
10.00	Dinkum Dinosaurs	Village Green	2.30	Abbey Dale	Kennards Community Stage
10.30	Dairy Goat Milking Demonstration, The Kindness Croft	Agricultural Learning Centre	3.00	Gawler Academy of Dance	Corpralite Main Stage
10.30	Dance Fitness with Selina	Kennards Community Stage	3.30	Sheep Dog/Shearing Demonstration, Jono's Sheep Shearing Services	Village Green
11.00	Official Opening, Opened by Young Rural Ambassador State Winner, Performance by Hewett Primary School	Corpralite Main Stage	3.30	Dairy Goat Milking Demonstration, The Kindness Croft	Agricultural Learning Centre
11.30	Woodchopping Demonstrations, Mallee Axeman's Association of SA Inc	Village Green	3.30	K-Pop Group - Lil' Star Team	Kennards Community Stage
11.30	Craigmore High School	Kennards Community Stage	4.00	Kozmik's Space Show	Corpralite Main Stage
12.00	Dinkum Dinosaurs	Village Green	4.30	Dinkum Dinosaurs	Village Green
12.00	Funny Farmers	Corpralite Main Stage	5.00	Londyn Forman - DJ	Corpralite Main Stage
12.30	Sheep Dog/Shearing Demonstration, Jono's Sheep Shearing Services	Village Green	6.00	Heatwave	Corpralite Main Stage
12.30	First Taekwondo	Kennards Community Stage	7.00	Kraken Fire Art	Corpralite Main Stage
1.00	Sun of Africa, Including a drumming workshop	Corpralite Main Stage	7.30	Impact Entertainment, Presented by TIDC Performing Arts Studio	Corpralite Main Stage
1.30	Woodchopping Demonstrations Mallee Axeman's Association of SA Inc	Village Green	8.00	Fireworks, Proudly Sponsored by Taylor & Forgie, Brought to you by Howard & Sons	Taylor & Forgie Arena
1.30	Two Wells Band	Kennards Community Stage	8.15	Londyn Forman - DJ	Corpralite Main Stage

SUNDAY, AUGUST 25

Time	Event	Location	Time	Event	Location
9.30	Gawler Youth Band	Kennards Community Stage	1.30	Woodchopping Demonstrations, Mallee Axeman's Association of SA Inc	Village Green
10.00	MTM Allstar Cheerleading	Corpralite Main Stage	1.30	Trinity College	Kennards Community Stage
10.00	Dinkum Dinosaurs	Village Green	2.00	Dance Crew SA	Corpralite Main Stage
10.30	Dairy Goat Milking Demonstration, The Kindness Croft	Agricultural Learning Centre	2.00	Dinkum Dinosaurs	Village Green
10.30	Sing Australia	Kennards Community Stage	2.30	Sheep Dog/Shearing Demonstration, Jono's Sheep Shearing Services	Village Green
11.00	Funny Farmers	Corpralite Main Stage	2.30	Abbey Dale	Kennards Community Stage
11.30	Woodchopping Demonstrations, Mallee Axeman's Association of SA Inc	Village Green	3.00	Grand Parade (inc Grand Lottery Draw at 3.15)	Taylor & Forgie Arena
11.30	Dance Fitness with Selina	Kennards Community Stage	3.00	Solly G Music	Corpralite Main Stage
12.00	Dinkum Dinosaurs	Village Green	3.30	Dairy Goat Milking Demonstration, The Kindness Croft	Agricultural Learning Centre
12.00	Emerauld	Corpralite Main Stage	3.30	Young Farmers Challenge	Taylor & Forgie Arena
12.30	Sheep Dog/Shearing Demonstration, Jono's Sheep Shearing Services	Village Green	3.30	Dinkum Dinosaurs	Village Green
12.30	First Taekwondo	Kennards Community Stage	3.30	Dance Fitness with Selina	Kennards Community Stage
1.00	Emerauld & Band	Corpralite Main Stage	4.00	K-Pop Group - Lil' Star Team	Corpralite Main Stage



'Meet & Greet' Nixon and the Fairy Tale Princess and Prince

Saturday and Sunday at the Kennards Community Stage

11.00	Fairy Tale Prince & Princesses
12.00	Nixon - Show Mascot
1.00	Fairy Tale Prince & Princesses
2.00	Nixon - Show Mascot

FREE ACTIVITIES

FIREWORKS

Saturday at 8pm

GRAND PARADE

Sunday at 3pm

NIXON'S ANIMAL ADVENTURES

Encourages showgoers to visit all the animals while unscrambling a word to go in the draw to win a Family Pass to next year's Show. Available from the Information Booth (near to the Main Gate)

TOUCH-A-TRUCK

Get an up close experience:

- Australian Defence Force
- CFS Roseworthy
- CFS - Region 2 Air Ops
- SAPOL
- SES
- Drag Cars
- Trucks and a Crane

BLACKSMITH DEMONSTRATIONS

Throughout Saturday and Sunday

Located in the Rural Ag Zone (near the ALC)

CAR DISPLAY

Saturday

AGRICULTURAL LEARNING CENTRE (ALC)

Saturday and Sunday 9am to 5pm

Come and visit and explore all there is to do at the ALC:

- Valais Blacknose Sheep supplied by No Eye Deer Farm
- Bugs 'N Slugs
- Animals Anonymous supplied by The Farm Barn
- The Bee Society
- Galloway Calves supplied by Talisha Rundle
- Baby Pigs
- Miniature Donkeys
- Alpacas
- Goat Milking Demonstrations Saturday and Sunday 10.30am and 3.30pm supplied by Kindness Croft
- Wool Display with hands on fleece to touch
- Miniature Goats display by Benclue Farm

VINTAGE ENGINES

Display by Gawler Machinery & Restorers and Gawler Tractor & Engine Assoc.

ENTERTAINMENT

Silent Disco - the most fun interactive wireless headphone party. Hosted by Gawler Broadcasting Association

YOUNG FARMERS CHALLENGE

Sunday at 3.30pm

Free competition open to teams of four people, must have at least one representative from each gender.

WOODCHOPPING DEMONSTRATIONS

Saturday and Sunday at 11.30am and 1.30pm

Mallee Axeman's Association of SA Inc

SHEEP DOG/SHEARING DEMONSTRATIONS

Saturday and Sunday at 12.30pm and 3pm

Jono's Sheep Shearing Services

CORPRALITE MAIN STAGE

Village Green

Dancing, singing, children shows, fire artist, bands

KENNARDS COMMUNITY STAGE

Rural Ag Zone

Rev-It Up Racing - Racing Simulator
School and community groups and upcoming artists

COMPETITIONS

Taylor & Forgie Arena

- Show Jumping
- Hacks and Breeds

Village Green

- Cattle (Saturday)
- Boer Goats (Sunday)
- Scarecrows

Rural Ag Zone

- Poultry (Saturday)
- Ute Muster (Sunday)
- Wool

Sports & Community Centre

- Cookery and Preserves
- Olive Oil

- Produce
- Art
- Needlework, Knitting and Dressmaking
- Photography
- School Posters
- Literacy
- Floriculture
- Handicrafts
- Junior Handicrafts



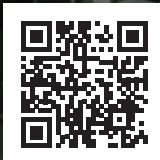
JOIN FOR

\$9.95*

PER WEEK!

FREE Crèche

SPRING SALE



*T&Cs apply.

FITNESS CENTRE starplex.com.au



at Trinity College

ENTRY TO THE SHOW IS THROUGH GATES 4 AND 7

1. Showbags
2. Vehicle Display/ Ute Muster
3. Community Zone
4. Pony Rides
5. Steam Engines and Old Tractors
6. Touch-A-Truck
7. Goats and Poultry
8. Agricultural Learning Centre

9. Wool Display
10. Blacksmiths
11. Trade/General Interest
12. Catering Area
13. Cattle Ring
14. Farm Fresh
15. Woodchopping Sheepdog and Shearing Demonstration Silent Disco
16. Corpralite Main Entertainment Stage
17. Licensed Bar
18. Treasure Trail Start
19. Information Booth Car Lottery Tickets Nixon's Animal Adventure HQ
20. Exhibition Halls
21. Horses In Action



© Map copyright of *The Bunyip* 2024, not to be reproduced without permission.